



ISO 9001 per la progettazione, l'installazione, il collaudo ed il servizio completo di project management per fornire "chiavi in mano" di impianti elettrici



ELETTROPIEMME SRL unipersonale
Società soggetta a direzione e coordinamento di
Gefran Soluzioni Srl

Via Linz, 137
38121 Trento - Italy

Tel. +39 0461 991935
Fax +39 0461 991936

www.elettropiemme.it
info@elettropiemme.it



A partner to achieve goals



Wiring on
board machine
Automation
switchboards



More performance less cost

Elettropiemme is an Italian Company, founded over 50 years ago in Trento, specialized in industrial automation, switchboards, wiring, complete wiring on board machine and industrial electrical plants.

Subsidiary Company of an important Italian Group: Gefran S.p.A.

Elettropiemme is now appreciated and recognized as one of the most dynamic and qualified in the field.

Products and services

Industrial automation on board machine:

- switchboards
- HMI systems
- supervision and control systems wiring
- electrical plants
- energy optimization of existing lines and revamping
- distribution switchboards
- preventive maintenance
- testing and technical assistance on place, both in Italy and abroad

Low voltage distribution switchboards up to 4.000 A

Industrial electrical plants

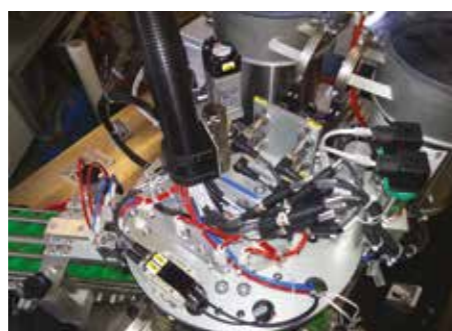
For decades Elettropiemme is working together with the OEM in the main sectors:

- wood
- plastic
- packaging
- food
- industry
- metal
- Hvac
- energy...

and anywhere in the design and production of wiring on board machine and industrial automation.

Our strengths

- Long experience in solving different issues
- Flexibility and customization of products and services
- Total quality and advantageous benefit/price ratio
- Dynamic organization
- International operating assistance
- Attention to details and aesthetics of the product





Design

The design is the key element in any industrial automation. The use of the most advanced cad on the market, as the new system Eplan, it allows to realize very complex projects in a short time.

Elettropiemme considers a fundamental and essential value the strict compliance with the agreed timing of processing, installation and testing.

But the design also means providing the customers with a management software of their systems with complete sets of quick and easy installation, reducing times to start the production.

Ellettropiemme assists its clients by offering consulting and support at all stages, from design to plant start up, in order to ensure always maximum efficiency, even over time.



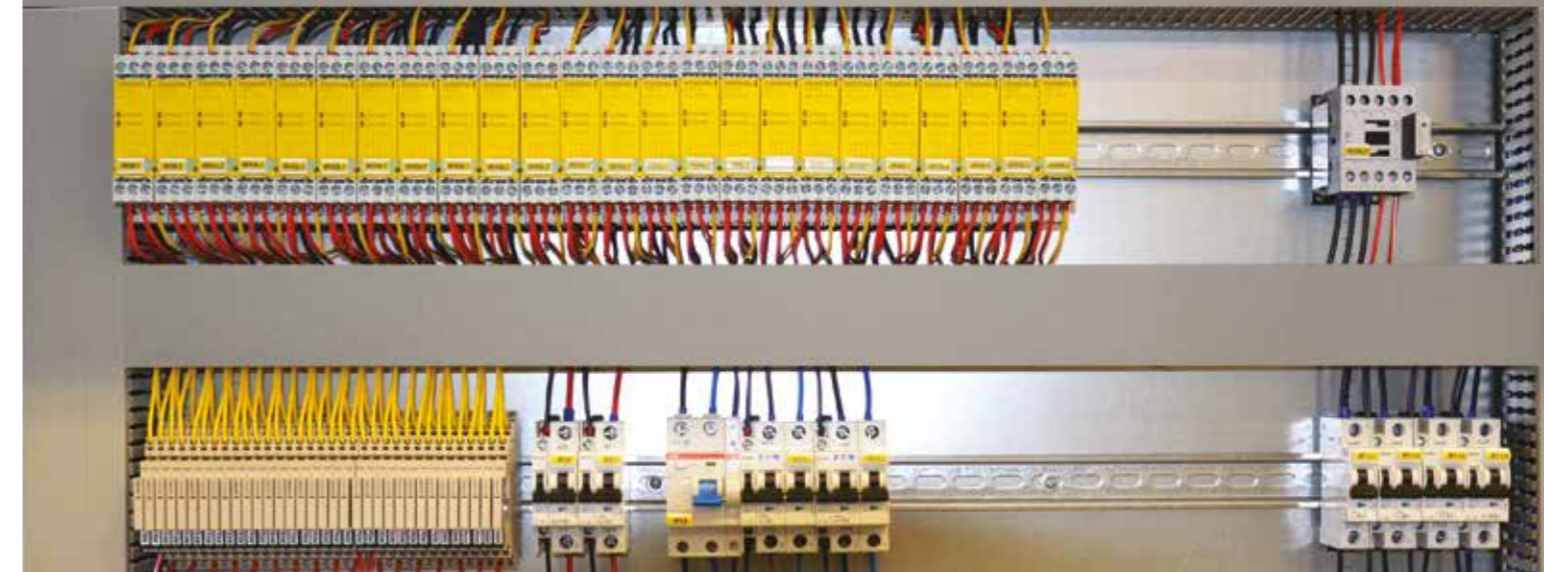
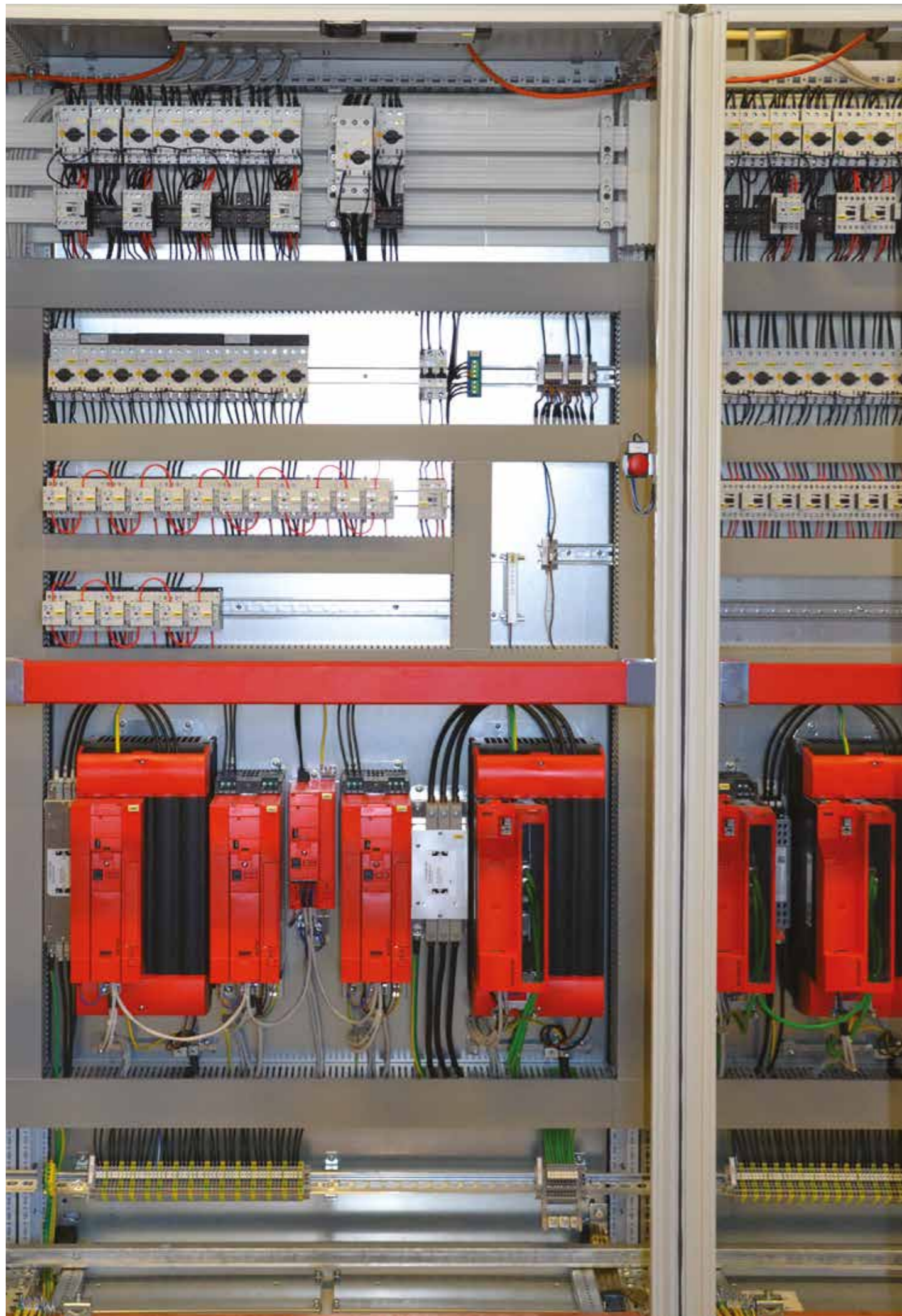
Attention to details

Elettropiemme manufactures aesthetically cured products and pays special attention to details.

A philosopher said that good things were always ethical; we believe that well-made things are also, naturally, beautiful and express the intrinsic quality and passion for the job.

A promise of value in line with the great Italian tradition in the production of machine tools, unanimously considered the best in the world.





Quality as result of continuous efforts

The company philosophy promotes the culture of quality and the respect of the commitments undertaken with the specific will of meeting the needs of customers who represent the most important component of the production cycle.

The systems, switchboards, wiring and all the equipment on board machine are in fact designed and manufactured in a complete satisfaction of the performance criteria required by the customer.

- Quality culture
- Complete satisfaction of the performance criteria required by the customer
- Total compliance with the regulations of machine destination (CE, UL...)
- Energy management of the machine and revamping
- Compact design
- Excellent components
- Fast and safely maintenance
- Expertise and constant updating